

HD/GHD BONGO I-1608

A Ruggedized, High Performance Bar Code Linear Imager
for Industry and General Purpose Applications

Ruggedized over-mold design to withstand multiple drops to concrete from 1.6 meter

GS1 DataBar, PDF, MicroPDF and composite code support

Outstanding reading capability on 3 mil barcode with more than 2" depth of field

More than 16" reading distance on 100% UPC/EAN symbols

Unsurpassed readability on low contrast, smudged, poorly-printed or damaged barcodes

Superior motion tolerance for rapid and accurate data-capture on the move

High speed scanning rate up to 500 scans per second for snappy barcode capture

All-in-one host interface design, including USB HID, USB COM, PS/2 keyboard wedge and RS232

Automatically switch between presentation scanning and hand-held scanning while working with HTZ SmartStand

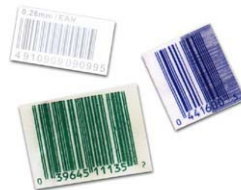
Optional vibrator for noisy working environment



Thanks to the revolutionary FuzzyScan 2.0 Imaging Technology and ruggedized construction, the new FuzzyScan I-1608 bar code linear imager from HTZ impresses the user with high scanning performance and exceptional reliability. The I-1608 series is the best-of-breed blend of form and functionality to meet the need of industry and general purpose applications.

Compact yet ruggedized construction

To deliver the highest level of dependability, the I-1608 is built with compact and robust over-mold housing. It is rugged enough to withstand multiple drops from 1.6 meter to concrete to meet your day-to-day scan-intensive use.



Outstanding reading performance

The I-1608 provides outstanding performance on reading damaged, smudged, poorly-printed and low contrast barcode labels that are commonly found in the real world quickly and accurately.

Latest linear-stacked barcodes support

To meet the latest application requirement, the I-1608GHD supports most popular linear-stacked barcodes, including PDF, MicroPDF, Codablock, GS1 Databar Linear-stacked and Composite.



Specifications

Performance Characteristics

Optical System	High performance Linear Imaging Engine
Print Contrast	20% minimum reflective difference
Minimum Resolution	Typical 3 mil (Code 39, PCS 0.9)
Working Distance ¹	More than 16 inches on 100% UPC/EAN symbols More than 24 inches on 20 mil Code 39
Light Source	630nm visible red LED
Scan Rate	Dynamic scanning rate up to 500 scans per second
Reading Direction	Bi-directional (forward and backward)
Pitch/Skew	± 65° / ± 65°
Operating Modes	Toggle, Trigger, Force, Level, Flash, Diagnostic Alternative, Low power, Presentation
Host Interfaces	PC/AT, PS/2 (DOS V) keyboard wedge PC/AT, PS/2 (DOS V) keyboard direct link TTL RS232 serial USB HID (USB Keyboard) USB COM port emulation Laser emulation and Wand emulation
Configuration Setup	Bar code command Windows utility - FuzzyScan PowerTool
Data Editing	Condensed DataWizard via bar code command Full-feature DataWizard via FuzzyScan PowerTool
User Interfaces	3 LEDs for power, good read and status indications Programmable beeper Optional vibrator

Supported Symbologies

1D Linear (I-1608 HD)	Code 39, Code 39 Full ASCII, Code 32, Code 39 Trioptic Code 128, UCC/EAN-128, Codabar, Code 11, Code 93 Standard & Industrial 2 of 5, Interleaved & Matrix 2 of 5 German Postal Code, China Postal Code, IATA UPC/EAN/JAN, UPC/EAN/JAN with Addendum Telepen, MSI/Plessey & UK/Plessey GS1 DataBar (formerly RSS) Linear, Linear-stacked
Linear-stacked (I-1608 GHD)	PDF417, Micro PDF417, Codablock, Composite

User Environment

Drop Specifications	Withstand multiple 1.6m/5ft. drops to concrete
Environmental Sealing	IP41
Operating Temperature	-10°C to 50°C (14°F to 122°F)
Storage Temperature	-40°C to 70°C (-40°F to 158°F)
Humidity	5% to 95% related humidity, non-condensing
Ambient Light Immunity	0 ~ 100,000 lux
ESD Protection	Functional after 15kV discharge

1. The working distances are measured in 400lux office environment using Grade A bar codes.
2. Don't stare into the LED beam.

Physical Characteristics

Dimension	97.8 mm (L) x 70.5 mm (W) x 156.2 mm (D) 3.85 in. (L) x 2.77 in. (W) x 6.15 in. (D)
Weight	157g (cable excluded)
Color	Light Gray or Black
Input Voltage	5VDC ± 10%
Current	Operating : Typical 180 mA @5VDC Standby : Typical 80 mA @5VDC

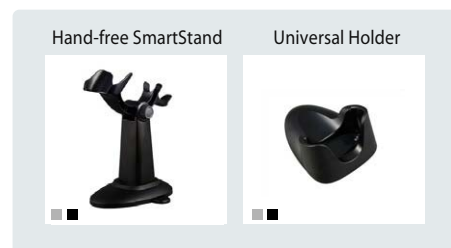
Safety & Regulatory

EMI/RFI	FCC Part 15 Class B, ICES-003 Class B European Union EMC Directive (CE) Taiwan EMC (BSMI)
Safety ²	LED Eye Safety IEC60825-1, EN60825-1
Environmental	Compliant with RoHS directive

Accessories

Cables	PS/2 (DOS V) Keyboard Wedge Cable RS232 Serial Cable USB Cable USB Power Steal Cable
Others	Hand-free SmartStand Universal Holder

Accessories



Colors Available : ■ black ■ light gray